

Dimensions

19"L x 22"W x 10.25"H

Other Specifications

Refrigerant: R-134a

Weight: 60 lbs



Electrical Information

115V 60Hz (20-amp dedicated breaker); 230V (subject to availability)

Maintenance

- Blow out condenser coil with nitrogen or compressed air every 3-4 months (**DO NOT USE WATER HOSE**)
- Verify condensate can drain freely all the way to the exit point of the drain line

Line Set Sizing

Liquid line: ¼" OD copper
Suction line: less than 50 feet, ½" OD copper; more than 50 feet, ⅝" OD copper

Dimensions

Evaporator unit: 16"L x 20.5"W x 15.5"H
Condensing unit: 16.08"L x 16.23"W x 12.61"H
Exterior condenser housing: 29.625"L x 20.5"W x 20"H



Evaporator unit

Other Specifications

Refrigerant: R-134a
Evaporator unit weight: 60 lbs
Condensing unit weight: 60 lbs

Electrical Information

Evaporator voltage: 115V 60Hz (15-amp dedicated breaker)
Condensing unit voltage: 115V 60HZ (15-amp dedicated breaker)



Condensing unit

Maintenance

- Drop a pan tablet into the evaporator drip tray every 3-4 months
- Clean evaporator air filters every 3-4 months
- Blow out condenser coil with nitrogen or compressed air every 3-4 months (**DO NOT USE WATER HOSE**)
- Clear out any growth or buildup in the evaporator tray and drain line
- Verify condensate can drain freely all the way to the exit point of the drain line

Line Set Sizing

Liquid line: ¼" OD copper

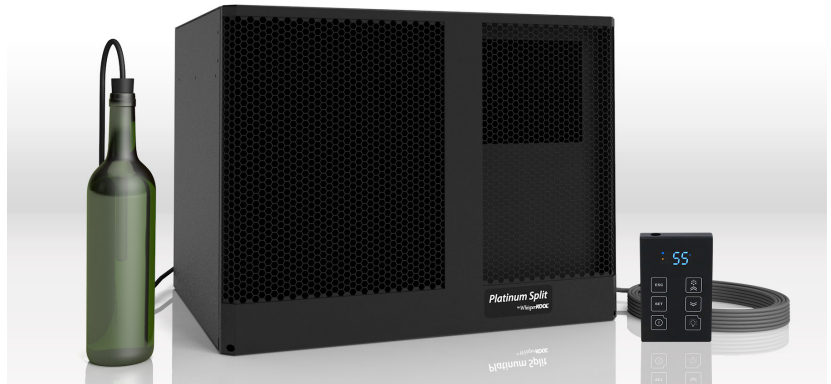
Suction line: less than 50 feet, ½" OD copper; more than 50 feet, ⅝" OD copper

Dimensions

Evaporator unit: 16"L x 20.5"W x 15.5"H

Condensing unit: 16.08"L x 16.23"W x 12.61"H

Exterior condenser housing: 29.625"L x 20.5"W x 20"H



Evaporator unit

Other Specifications

Refrigerant: R-134a

Evaporator unit weight: 60 lbs

Condensing unit weight: 60 lbs

Electrical Information

Evaporator voltage: 115V 60Hz (15-amp dedicated breaker)

Condensing unit voltage: 115V 60HZ (20-amp dedicated breaker)



Condensing unit

Maintenance

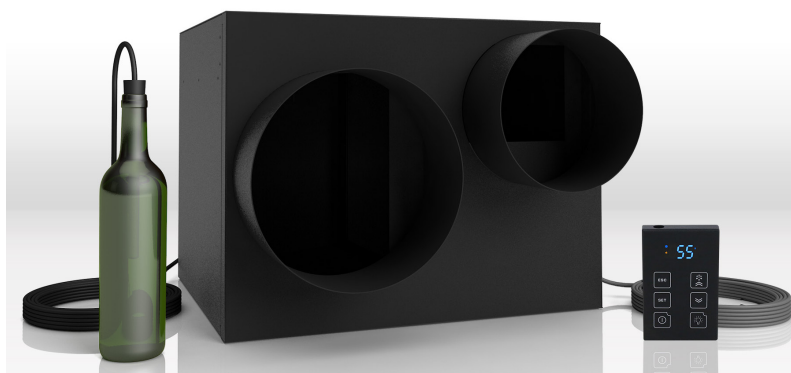
- Drop a pan tablet into the evaporator drip tray every 3-4 months
- Clean evaporator air filters every 3-4 months
- Blow out condenser coil with nitrogen or compressed air every 3-4 months (**DO NOT USE WATER HOSE**)
- Clear out any growth or buildup in the evaporator tray and drain line
- Verify condensate can drain freely all the way to the exit point of the drain line

Line Set Sizing

Liquid line: ¼" OD copper
Suction line: less than 50 feet, ½" OD copper; more than 50 feet, ⅝" OD copper

Dimensions

Evaporator units: 20"L x 20.5"W x 15.5"H
Condensing unit: 16.08"L x 16.23"W x 12.61"H
Exterior condenser housing: 29.625"L x 20.5"W x 20"H



Evaporator unit

Ducting Specifications

Supply duct size: 8"
Return duct size: 10"
Recommended register size: 12" x 12"
Maximum duct length: 25-ft. supply, 25-ft. return

Other Specifications

Refrigerant: R-134a
Evaporator unit weight: 60 lbs
Condensing unit weight: 60 lbs

Electrical Information

Evaporator voltage: 115V 60Hz (15-amp dedicated breaker)
Condensing unit voltage: 115V 60HZ (15-amp dedicated breaker)



Condensing unit

Maintenance

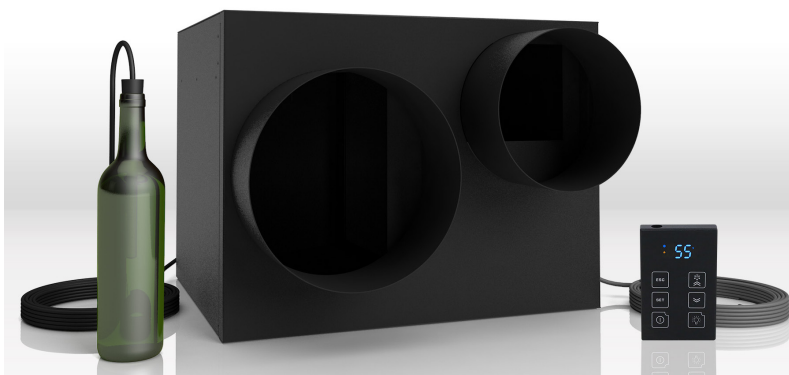
- Drop a pan tablet into the evaporator drip tray every 3-4 months
- Replace duct filters every 3-4 months
- Blow out condenser coil with nitrogen or compressed air every 3-4 months (**DO NOT USE WATER HOSE**)
- Clear out any growth or buildup in the evaporator tray and drain line
- Verify condensate can drain freely all the way to the exit point of the drain line

Line Set Sizing

Liquid line: ¼" OD copper
Suction line: less than 50 feet, ½" OD copper; more than 50 feet, ⅝" OD copper

Dimensions

Evaporator units: 20"L x 20.5"W x 15.5"H
Condensing unit: 16.08"L x 16.23"W x 12.61"H
Exterior condenser housing: 29.625"L x 20.5"W x 20"H



Evaporator unit

Ducting Specifications

Supply duct size: 8"
Return duct size: 10"
Recommended register size: 12" x 12"
Maximum duct length: 25-ft. supply, 25-ft. return

Other Specifications

Refrigerant: R-134a
Evaporator unit weight: 60 lbs
Condensing unit weight: 60 lbs

Electrical Information

Evaporator voltage: 115V 60Hz (15-amp dedicated breaker)
Condensing unit voltage: 115V 60HZ (20-amp dedicated breaker)



Condensing unit

Maintenance

- Drop a pan tablet into the evaporator drip tray every 3-4 months
- Replace duct filters every 3-4 months
- Blow out condenser coil with nitrogen or compressed air every 3-4 months (**DO NOT USE WATER HOSE**)
- Clear out any growth or buildup in the evaporator tray and drain line
- Verify condensate can drain freely all the way to the exit point of the drain line

Line Set Sizing

Liquid line: 3/8" OD copper
Suction line: less than 50 feet, 3/4" OD copper; more than 50 feet, 7/8" OD copper

Dimensions

Evaporator units: 16" L x 20.5" W x 15.5" H
Condensing unit: 24" L x 18.98" W x 16.16" H
Exterior condenser housing: 29.625" L x 20.5" W x 20" H



Evaporator units

Other Specifications

Refrigerant: R-134a
Evaporator unit weight: 60 lbs
Condensing unit weight: 95 lbs

Electrical Information

Evaporator voltage: 115V 60Hz (15-amp dedicated breaker)
Condensing unit voltage: 230V 60HZ (15-amp dedicated breaker)



Condensing unit

Maintenance

- Drop a pan tablet into the evaporator drip tray every 3-4 months
- Replace duct filters every 3-4 months
- Blow out condenser coil with nitrogen or compressed air every 3-4 months (**DO NOT USE WATER HOSE**)
- Clear out any growth or buildup in the evaporator tray and drain line
- Verify condensate can drain freely all the way to the exit point of the drain line

Line Set Sizing

Liquid line: 3/8" OD copper
Suction line: less than 50 feet, 3/4" OD copper; more than 50 feet, 7/8" OD copper



Evaporator units

Dimensions

Evaporator units: 16"L x 20.5"W x 15.5"H
Condensing unit: 24"L x 18.98"W x 16.16"H
Exterior condenser housing: 29.625"L x 20.5"W x 20"H

Ducting Specifications

Supply duct size: 8"
Return duct size: 10"
Recommended register size: 12" x 12"
Maximum duct length: 25-ft. supply, 25-ft. return

Other Specifications

Refrigerant: R-134a
Evaporator unit weight: 60 lbs
Condensing unit weight: 95 lbs



Condensing unit

Electrical Information

Evaporator voltage: 115V 60Hz (15-amp dedicated breaker)
Condensing unit voltage: 230V 60HZ (15-amp dedicated breaker)

Maintenance

- Drop a pan tablet into the evaporator drip tray every 3-4 months
- Replace duct filters every 3-4 months
- Blow out condenser coil with nitrogen or compressed air every 3-4 months (**DO NOT USE WATER HOSE**)
- Clear out any growth or buildup in the evaporator tray and drain line
- Verify condensate can drain freely all the way to the exit point of the drain line

Line Set Sizing

Liquid line: 1/4" OD copper
Suction line: 3/8" OD copper

Dimensions

Evaporator unit: 13"L x 20"W x 10.5"H
Condensing unit: 16"L x 11.5"W x 8.9"H
Exterior condenser housing: 29.625"L x 20.5"W x 20"H



Evaporator unit

Other Specifications

Refrigerant: R-134a
Evaporator unit weight: 25 lbs
Condensing unit weight: 38.8 lbs

Electrical Information

Evaporator voltage: 115V 60Hz (15-amp dedicated breaker)
Condensing unit voltage: 115V 60HZ (15-amp dedicated breaker)



Condensing unit

Maintenance

- Drop a pan tablet into the evaporator drip tray every 3-4 months
- Clean evaporator air filters every 3-4 months
- Blow out condenser coil with nitrogen or compressed air every 3-4 months (**DO NOT USE WATER HOSE**)
- Clear out any growth or buildup in the evaporator tray and drain line
- Verify condensate can drain freely all the way to the exit point of the drain line

Dimensions

28"L x 14.25"W x 15.75"H

Other Specifications

Refrigerant: R-134a

Weight: 150 lbs



Electrical Information

115V 60Hz (20-amp dedicated breaker); 230V (subject to availability)

Maintenance

- Blow out condenser coil with nitrogen or compressed air every 3-4 months (**DO NOT USE WATER HOSE**)
- Clear out any growth or buildup in the evaporator tray and drain line
- Drop a pan tab into the drip tray via the access panel every 3 months
- Verify condensate can drain freely all the way to the exit point of the drain line

Dimensions

28"L x 14.25"W x 15.75"H

Other Specifications

Refrigerant: R-134a

Weight: 150 lbs

Electrical Information

115V 60Hz (20-amp dedicated breaker); 230V (subject to availability)



Maintenance

- Blow out condenser coil with nitrogen or compressed air every 3-4 months (**DO NOT USE WATER HOSE**)
- Clear out any growth or buildup in the evaporator tray and drain line
- Drop a pan tab into the drip tray via the access panel every 3 months
- Verify condensate can drain freely all the way to the exit point of the drain line

Dimensions

28"L x 14.25"W x 22.5"H

Other Specifications

Refrigerant: R-134a

Weight: 170 lbs

Electrical Information

115V 60Hz (20-amp dedicated breaker);
230V (subject to availability)



Maintenance

- Blow out condenser coil with nitrogen or compressed air every 3-4 months (**DO NOT USE WATER HOSE**)
- Clear out any growth or buildup in the evaporator tray and drain line
- Drop a pan tab into the drip tray via the access panel every 3 months
- Verify condensate can drain freely all the way to the exit point of the drain line

Dimensions

39.5"L x 14.25"W x 22.5"H (with duct plenums)

Ducting Specifications

Supply duct size: 8"

Return duct size: 8"

Recommended register size: 12" x 12"

Maximum duct length: 25-ft. supply,
25-ft. return

Other Specifications

Refrigerant: R-134a

Weight: 150 lbs



*UNIT PLENUMS COME UNPAINTED

Electrical Information

115V 60Hz (20-amp dedicated breaker); 230V (subject to availability)

Maintenance

- Drop a pan tablet into the evaporator drip tray every 3-4 months
- Replace duct filters every 3-4 months
- Blow out condenser coil with nitrogen or compressed air every 3-4 months (**DO NOT USE WATER HOSE**)
- Clear out any growth or buildup in the evaporator tray and drain line
- Verify condensate can drain freely all the way to the exit point of the drain line

Dimensions

39.5"L x 14.25"W x 22.5"H (without duct plenums)

Ducting Specifications

Supply duct size: 8"

Return duct size: 8"

Recommended register size: 12" x 12"

Maximum duct length: 25-ft. supply,
25-ft. return

Other Specifications

Refrigerant: R-134a

Weight: 150 lbs



Electrical Information

115V 60Hz (20-amp dedicated breaker); 230V (subject to availability)

Maintenance

- Drop a pan tablet into the evaporator drip tray every 3-4 months
- Replace duct filters every 3-4 months
- Blow out condenser coil with nitrogen or compressed air every 3-4 months (**DO NOT USE WATER HOSE**)
- Clear out any growth or buildup in the evaporator tray and drain line
- Verify condensate can drain freely all the way to the exit point of the drain line

Dimensions

39.5"L x 14.25"W x 22.5"H (without duct plenums)

Ducting Specifications

Supply duct size: 8"

Return duct size: 10"

Recommended register size: 12" x 12"

Maximum duct length: 25-ft. supply,
25-ft. return

Other Specifications

Refrigerant: R-134a

Weight: 187 lbs

Electrical Information

115V 60Hz (20-amp dedicated breaker); 230V (subject to availability)

Maintenance

- Drop a pan tablet into the evaporator drip tray every 3-4 months
- Replace duct filters every 3-4 months
- Blow out condenser coil with nitrogen or compressed air every 3-4 months (**DO NOT USE WATER HOSE**)
- Clear out any growth or buildup in the evaporator tray and drain line
- Verify condensate can drain freely all the way to the exit point of the drain line



Dimensions

17.5"L x 14.25"W x 15.75"H

Other Specifications

Refrigerant: R-134a

Weight: 60 lbs

Electrical Information

115V 60Hz (20-amp dedicated breaker); 230V
(subject to availability)



Maintenance

- Blow out condenser coil with nitrogen or compressed air every 3-4 months (**DO NOT USE WATER HOSE**)
- Clear out any growth or buildup in the evaporator tray and drain line
- Drop a pan tab into the drip tray via the small circular access port every 3 months
- Verify condensate can drain freely all the way to the exit point of the drain line

Dimensions

17.5"L x 14.25"W x 15.75"H

Other Specifications

Refrigerant: R-134a

Weight: 60 lbs

Electrical Information

115V 60Hz (20-amp dedicated breaker); 230V
(subject to availability)



Maintenance

- Blow out condenser coil with nitrogen or compressed air every 3-4 months (**DO NOT USE WATER HOSE**)
- Clear out any growth or buildup in the evaporator tray and drain line
- Drop a pan tab into the drip tray via the small circular access port every 3 months
- Verify condensate can drain freely all the way to the exit point of the drain line

Dimensions

17.5"L x 14.25"W x 15.75"H

Other Specifications

Refrigerant: R-134a

Weight: 60 lbs

Electrical Information

115V 60Hz (20-amp dedicated breaker); 230V
(subject to availability)



Maintenance

- Blow out condenser coil with nitrogen or compressed air every 3-4 months (**DO NOT USE WATER HOSE**)
- Clear out any growth or buildup in the evaporator tray and drain line
- Drop a pan tab into the drip tray via the small circular access port every 3 months
- Verify condensate can drain freely all the way to the exit point of the drain line

Dimensions

21.64"L x 14.25"W x 22.56"H

Other Specifications

Refrigerant: R-134a

Weight: 90 lbs

Electrical Information

115V 60Hz (20-amp dedicated breaker); 230V
(subject to availability)



Maintenance

- Blow out condenser coil with nitrogen or compressed air every 3-4 months (**DO NOT USE WATER HOSE**)
- Clear out any growth or buildup in the evaporator tray and drain line
- Drop a pan tab into the drip tray via the small circular access port every 3 months
- Verify condensate can drain freely all the way to the exit point of the drain line

Dimensions

21.64"L x 14.25"W x 22.56"H

Other Specifications

Refrigerant: R-134a

Weight: 90 lbs

Electrical Information

115V 60Hz (20-amp dedicated breaker); 230V
(subject to availability)



Maintenance

- Blow out condenser coil with nitrogen or compressed air every 3-4 months (**DO NOT USE WATER HOSE**)
- Clear out any growth or buildup in the evaporator tray and drain line
- Drop a pan tab into the drip tray via the small circular access port every 3 months
- Verify condensate can drain freely all the way to the exit point of the drain line

Dimensions

37"L x 15.75"W x 15.75"H (without duct plenums)
48"L x 15.75"W x 22.75"H (duct plenums on top of unit)
48"L x 22.75"W x 15.75"H (duct plenums on side of unit)



Ducting Specifications

Supply duct size: 8"
Return duct size: 10"
Recommended register size: 12" x 12"
Maximum duct length: 25-ft. supply, 25-ft. return

Other Specifications

Refrigerant: R-134a
Weight: 187 lbs

Electrical Information

115V 60Hz (20-amp dedicated breaker); 230V (subject to availability)

Maintenance

- Drop a pan tablet into the evaporator drip tray every 3-4 months
- Replace duct filters every 3-4 months
- Blow out condenser coil with nitrogen or compressed air every 3-4 months (**DO NOT USE WATER HOSE**)
- Clear out any growth or buildup in the evaporator tray and drain line
- Verify condensate can drain freely all the way to the exit point of the drain line

Dimensions

37"L x 15.75"W x 15.75"H (without duct plenums)
48"L x 15.75"W x 22.75"H (duct plenums on top of unit)
48"L x 22.75"W x 15.75"H (duct plenums on side of unit)



Ducting Specifications

Supply duct size: 8"
Return duct size: 10"
Recommended register size: 12" x 12"
Maximum duct length: 25-ft. supply, 25-ft. return

Other Specifications

Refrigerant: R-134a
Weight: 187 lbs

Electrical Information

115V 60Hz (20-amp dedicated breaker); 230V (subject to availability)

Maintenance

- Drop a pan tablet into the evaporator drip tray every 3-4 months
- Replace duct filters every 3-4 months
- Blow out condenser coil with nitrogen or compressed air every 3-4 months (**DO NOT USE WATER HOSE**)
- Clear out any growth or buildup in the evaporator tray and drain line
- Verify condensate can drain freely all the way to the exit point of the drain line

Dimensions

37"L x 15.75"W x 15.75"H (without duct plenums)
48"L x 15.75"W x 22.75"H (duct plenums on top of unit)
48"L x 22.75"W x 15.75"H (duct plenums on side of unit)



Ducting Specifications

Supply duct size: 8"
Return duct size: 10"
Recommended register size: 12" x 12"
Maximum duct length: 25-ft. supply, 25-ft. return

Other Specifications

Refrigerant: R-134a
Weight: 187 lbs

Electrical Information

115V 60Hz (20-amp dedicated breaker); 230V (subject to availability)

Maintenance

- Drop a pan tablet into the evaporator drip tray every 3-4 months
- Replace duct filters every 3-4 months
- Blow out condenser coil with nitrogen or compressed air every 3-4 months (**DO NOT USE WATER HOSE**)
- Clear out any growth or buildup in the evaporator tray and drain line
- Verify condensate can drain freely all the way to the exit point of the drain line

Line Set Sizing

Liquid line: ¼" OD copper
Suction line: less than 50 feet, ½" OD copper; more than 50 feet, ⅝"

Dimensions

Evaporator unit: 35.75"L x 14.5"W x 12.75"H

Condensing unit: 16.08"L x 16.23"W x 12.61"H

Exterior condenser housing: 29.625"L x 20.5"W x 20"H



Evaporator unit

Other Specifications

Refrigerant: R-134a

Evaporator unit weight: 90 lbs

Condensing unit weight: 60 lbs

Electrical Information

Evaporator voltage: 115V 60Hz (15-amp dedicated breaker)

Condensing unit voltage: 115V 60HZ (15-amp dedicated breaker)



Condensing unit

Maintenance

- Drop a pan tablet into the evaporator drip tray every 3-4 months
- Clean evaporator air filters every 3-4 months
- Blow out condenser coil with nitrogen or compressed air every 3-4 months (**DO NOT USE WATER HOSE**)
- Clear out any growth or buildup in the evaporator tray and drain line
- Verify condensate can drain freely all the way to the exit point of the drain line

NOTE: The unit comes equipped with a condensate pump. The ¼" ID hose coming out of the unit should be adapted to a ½" rigid tube (Pex) to ensure effective drainage and pump operation.

Line Set Sizing

Liquid line: ¼" OD copper
Suction line: less than 50 feet, ½" OD copper; more than 50 feet, ⅝"

Dimensions

Evaporator unit: 35.75"L x 14.5"W x 12.75"H
Condensing unit: 16.08"L x 16.23"W x 12.61"H
Exterior condenser housing: 29.625"L x 20.5"W x 20"H



Evaporator unit

Other Specifications

Refrigerant: R-134a
Evaporator unit weight: 90 lbs
Condensing unit weight: 60 lbs

Electrical Information

Evaporator voltage: 115V 60Hz (15-amp dedicated breaker)
Condensing unit voltage: 115V 60HZ (20-amp dedicated breaker)



Condensing unit

Maintenance

- Drop a pan tablet into the evaporator drip tray every 3-4 months
- Clean evaporator air filters every 3-4 months
- Blow out condenser coil with nitrogen or compressed air every 3-4 months (**DO NOT USE WATER HOSE**)
- Clear out any growth or buildup in the evaporator tray and drain line
- Verify condensate can drain freely all the way to the exit point of the drain line

NOTE: The unit comes equipped with a condensate pump. The ¼" ID hose coming out of the unit should be adapted to a ½" rigid tube (Pex) to ensure effective drainage and pump operation.

Line Set Sizing

Liquid line: 1/4" OD copper
Suction line: less than 50 feet, 3/8" OD copper; more than 50 feet, 1/2"

Dimensions

Evaporator unit: 22.05"L x 11.08"W x 11.34"H
Condensing unit: 13.97"L x 15.85"W x 9.86"H
Exterior condenser housing: 29.625"L x 20.5"W x 20"H



Evaporator unit

Other Specifications

Refrigerant: R-134a
Evaporator unit weight: 50 lbs
Condensing unit weight: 50 lbs

Electrical Information

Evaporator voltage: 115V 60Hz (15-amp dedicated breaker)
Condensing unit voltage: 115V 60HZ (15-amp dedicated breaker)



Condensing unit

Maintenance

- Drop a pan tablet into the evaporator drip tray every 3-4 months
- Clean evaporator air filters every 3-4 months
- Blow out condenser coil with nitrogen or compressed air every 3-4 months (**DO NOT USE WATER HOSE**)
- Clear out any growth or buildup in the evaporator tray and drain line
- Verify condensate can drain freely all the way to the exit point of the drain line

NOTE: The unit comes equipped with a condensate pump. The 1/4" ID hose coming out of the unit should be adapted to a 1/2" rigid tube (Pex) to ensure effective drainage and pump operation.

Line Set Sizing

Liquid line: 3/8" OD copper
Suction line: less than 50 feet, 3/4" OD copper; more than 50 feet, 7/8"

Dimensions

Evaporator units: 35.75"L x 14.5"W x 12.75"H
Condensing unit: 16.08"L x 16.23"W x 12.61"H
Exterior condenser housing: 29.625"L x 20.5"W x 20"H



Evaporator units

Other Specifications

Refrigerant: R-134a
Evaporator unit weight: 90 lbs
Condensing unit weight: 95 lbs

Electrical Information

Evaporator voltage: 115V 60Hz (15-amp dedicated breaker)
Condensing unit voltage: 230V 60HZ (15-amp dedicated breaker)



Condensing unit

Maintenance

- Drop a pan tablet into the evaporator drip trays every 3-4 months
- Clean evaporators' air filters every 3-4 months
- Blow out condenser coil with nitrogen or compressed air every 3-4 months (**DO NOT USE WATER HOSE**)
- Clear out any growth or buildup in the evaporator trays and drain lines
- Verify condensate can drain freely all the way to the exit point of the drain lines

NOTE: The unit comes equipped with a condensate pump. The 1/4" ID hose coming out of the unit should be adapted to a 1/2" rigid tube (Pex) to ensure effective drainage and pump operation.

Line Set Sizing

Liquid line: 3/8" OD copper

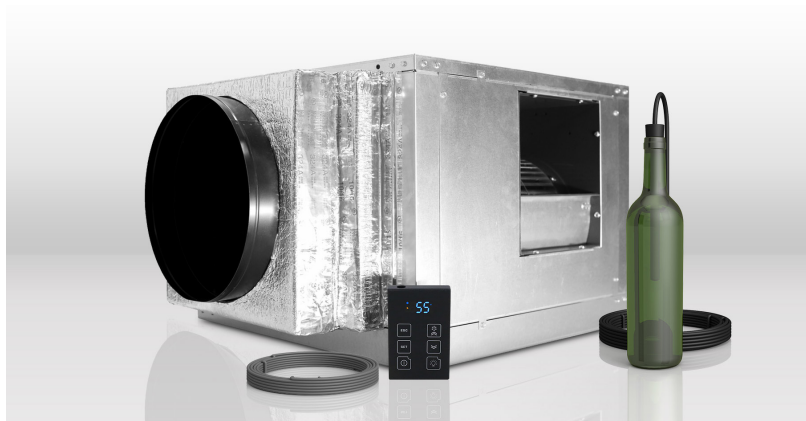
Suction line: less than 50 feet, 3/4" OD copper; more than 50 feet, 7/8" OD copper

Dimensions

Evaporator units: 29.5"L x 30.9"W x 19.8"H

Condensing unit: 24"L x 18.98"W x 16.16"H

Exterior condenser housing: 29.625"L x 20.5"W x 20"H



Evaporator unit

Ducting Specifications

Supply duct size: 14"

Return duct size: 14"

Recommended register size: 14" x 14"

Maximum duct length: 25-ft. supply, 25-ft. return

Other Specifications

Refrigerant: R-134a

Evaporator unit weight: 133 lbs

Condensing unit weight: 95 lbs



Condensing unit

Electrical Information

Evaporator voltage: 115V 60Hz (15-amp dedicated breaker)

Condensing unit voltage: 230V 60HZ (15-amp dedicated breaker)

Maintenance

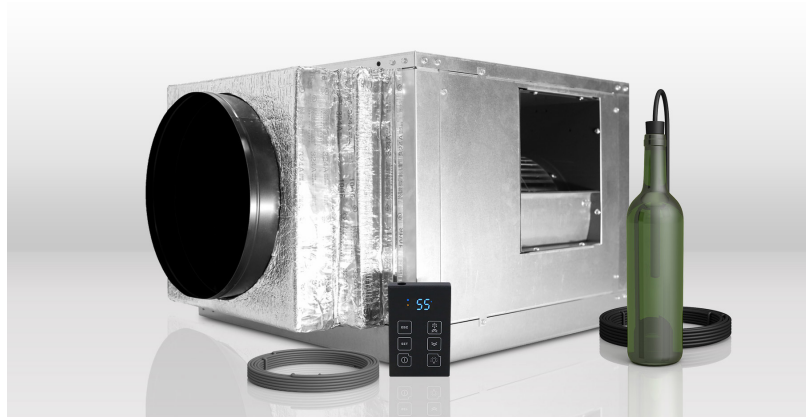
- Drop a pan tablet into the evaporator drip tray every 3-4 months
- Replace duct filters every 3-4 months
- Blow out condenser coil with nitrogen or compressed air every 3-4 months (**DO NOT USE WATER HOSE**)
- Clear out any growth or buildup in the evaporator tray and drain line
- Verify condensate can drain freely all the way to the exit point of the drain line

Line Set Sizing

Liquid line: 3/8" OD copper
Suction line: less than 50 feet, 7/8" OD copper; more than 50 feet, 1" OD copper

Dimensions

Evaporator units: 29.5"L x 30.9"W x 19.8"H
Condensing unit: 24"L x 18.98"W x 16.16"H
Exterior condenser housing: 29.625"L x 20.5"W x 20"H



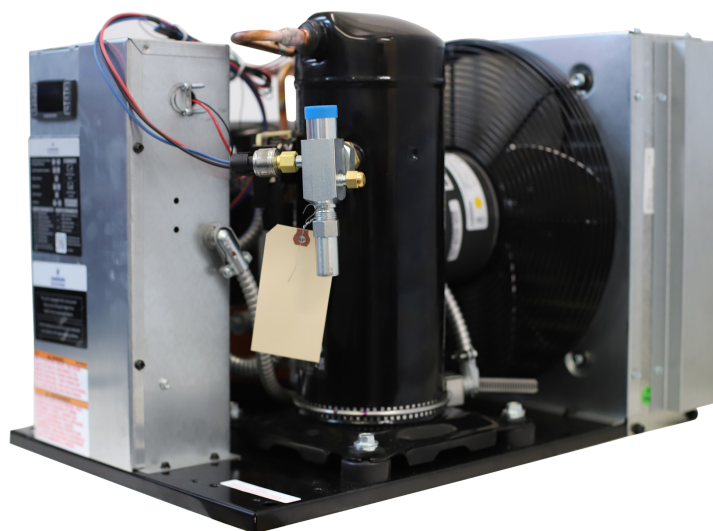
Evaporator unit

Ducting Specifications

Supply duct size: 14"
Return duct size: 14"
Recommended register size: 14" x 14"
Maximum duct length: 25-ft. supply, 25-ft. return

Other Specifications

Refrigerant: R-134a
Evaporator unit weight: 133 lbs
Condensing unit weight: 115 lbs



Condensing unit

Electrical Information

Evaporator voltage: 115V 60Hz (15-amp dedicated breaker)
Condensing unit voltage: 230V 60HZ (15-amp dedicated breaker)

Maintenance

- Drop a pan tablet into the evaporator drip tray every 3-4 months
- Replace duct filters every 3-4 months
- Blow out condenser coil with nitrogen or compressed air every 3-4 months (**DO NOT USE WATER HOSE**)
- Clear out any growth or buildup in the evaporator tray and drain line
- Verify condensate can drain freely all the way to the exit point of the drain line