

Phantom
24V THERMOSTAT
CONVERSION KIT
Installation Manual

24V Thermostat Conversion Kit to be used in
conjunction with Phantom 3500/5000/8000

Conforms to ANSI/UL Std 427

Certified to CAN/CSA Std C22.2 No. 120

We manufacture, test and certify 100% of our wine cooling units in the USA. By sourcing the best components and closely controlling our manufacturing processes, we can assure the highest-quality, lowest defect manufacturing rates in the industry.

Copyright © 2018. WhisperKOOL. All rights reserved.

WhisperKOOL copyrights this manual, the product design, and the design concepts, with all rights reserved. Your rights with regard to the hardware and manual are subject to the restrictions and limitations imposed by the copyright laws of the USA. Under copyright laws, this manual may not be copied, reproduced, translated, transmitted, or reduced to any printed or electronic medium or to any machine-readable form, for any purpose, in whole or in part, without the written consent of WhisperKOOL.

Every effort has been made to ensure that the information in this manual is accurate. WhisperKOOL is not responsible for printing or clerical errors.

WhisperKOOL reserves the right to make corrections or improvements to the information provided and to the related hardware at any time, without notice.

Vinothèque and WhisperKOOL are registered trademarks, and ECE is a trademark of WhisperKOOL. All rights reserved.

Mention of third-party products is for informational purposes only and constitutes neither an endorsement nor a recommendation. WhisperKOOL assumes no liability with regard to the performance or use of these products.

TABLE OF CONTENTS

Receiving & Inspecting the Kit	3
Before You Start	4
24V Thermostat Conversion Kit Installation Instructions	5

INTRODUCTION

Customer Service

Thank you for purchasing a WhisperKOOL 24V Thermostat Conversion Kit. We strive to provide the highest-quality products and the best possible customer service. If you have any questions about your system, please call us at 1-800-343-9463 or visit whisperkool.com.

Using the Manual

This installation manual is intended to provide detailed instructions for the installation of the 24V Thermostat Conversion Kit on the Phantom cooling system. In order to ensure the proper longevity of your cooling unit, the equipment should be installed as outlined in this manual. Please read and review this manual carefully and keep it for future reference.

What is a 24V Thermostat Conversion Kit?

The 24V Thermostat Conversion Kit is a WhisperKOOL product that allows the customer to switch from the provided standard 120V controller to a 24V thermostat of their choosing (i.e. Nest, Ecobee, Honeywell etc.)

*Note: 24V Thermostat not provided by WhisperKOOL

How Does the 24V Thermostat Conversion Kit Work?

The 24V Thermostat Conversion Kit allows the customer the ability to utilize a 24V smart thermostat to control the operation of their WhisperKOOL unit. Note: 24V Thermostat must be placed inside the wine cellar in a central location, away from direct airflow.

Note: WhisperKOOL does not provide technical/customer support for any 24V thermostat. Please contact the manufacturer of your chosen 24V thermostat for troubleshooting.

STEP 1: RECEIVING & INSPECTING THE KIT

Upon receiving your 24V Thermostat Conversion Kit:

- Inspect the packaging for any obvious signs of damage or mishandling before opening the container.
- Note any discrepancies or visual damage on the bill of lading before signing.
- Review the packing slip to verify contents.
- Check the model number to ensure it is correct.

If any items listed on the packing slip do not match your order information, contact WhisperKOOL Customer Service immediately.

REMEMBER:

1. **Inspect the kit before installation.** If damage is found, please contact your distributor or WhisperKOOL Customer Service at 1-800-343-9463.
2. Verify that you have received all of the items on the component list below and that the kit corresponds with your specific WhisperKOOL cooling system.
3. The system is intended **for use in properly designed and constructed wine cellars.** Hire a professional wine storage consultant with a valid contractor's license to build your wine cellar.
4. WhisperKOOL recommends that all 24V Thermostat Conversion Kits be installed by a certified HVAC-R technician only.

Evaporator unit components provided:

- 24V conversion kit enclosure
- Installation instructions
- Accessory kit
- Molex adapter

Tools needed:

- Wire cutters
- Wire strippers
- 5/16" nut driver
- 11/32" nut driver
- Phillips #1 screw driver
- Needle nose pliers
- 5/16" drill bit

Accessory Kit Items:

- Cable tie (x8)
- Cable tie holder (x3)
- Wire nut (x4)
- Strip of Cork Tape
- Rubber grommet

Components Needed (not included):

- 24V thermostat
- 18-5 thermostat wire

After verifying that you have received all of the correct components for your specific system, please keep the 24V Conversion Kit in its original box until you are ready for installation. This will allow you to move the product safely without damaging it. When you are ready to remove the product from the box, refer to the installation instructions.

TIP: Save your box and all packaging materials. They provide the only safe means of transporting/shipping the unit.

STEP 2: BEFORE YOU START



Shut off power to the evaporator and condensing unit.



Disconnect the cooling unit from the power source.



WARNING: Failure to disconnect the power may cause electrical shock, which can result in injury or death.



Note: If the unit is hard-wired to a dedicated power source, shut off the designated breaker.

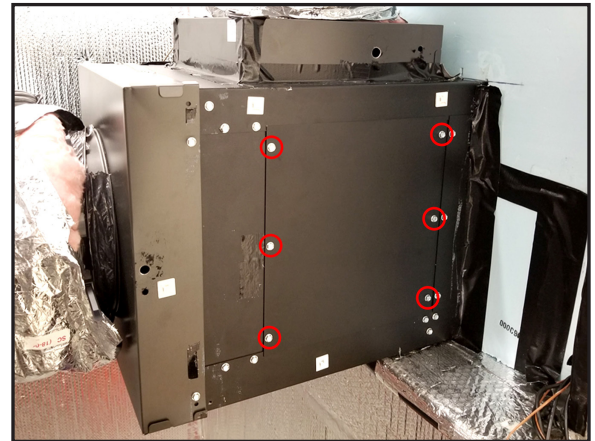
24V THERMOSTAT CONVERSION KIT INSTALLATION INSTRUCTIONS

- 3** Disconnect power from the cooling unit.

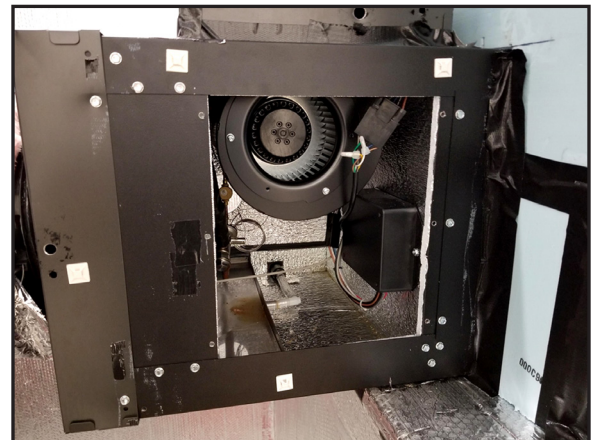
Note: If the unit is hard wired to a dedicated power source, shut off the designated breaker.



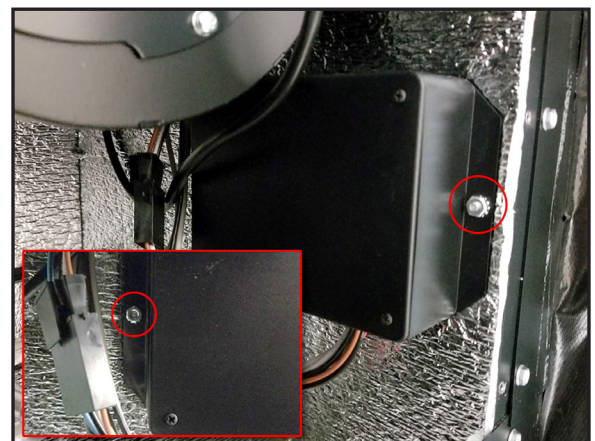
- 4** Using a 5/16" nut driver to loosen the screws securing the evaporator access panel to the unit.



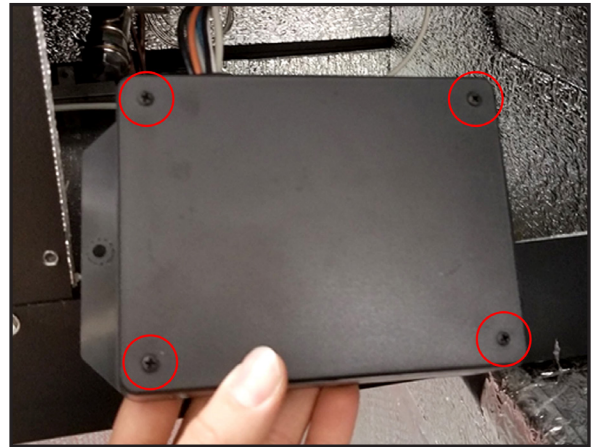
- 5** Remove access panel from unit.



- 6** Locate the controller enclosure as shown. Remove the two 11/32" hex nuts securing the enclosure to the divider.



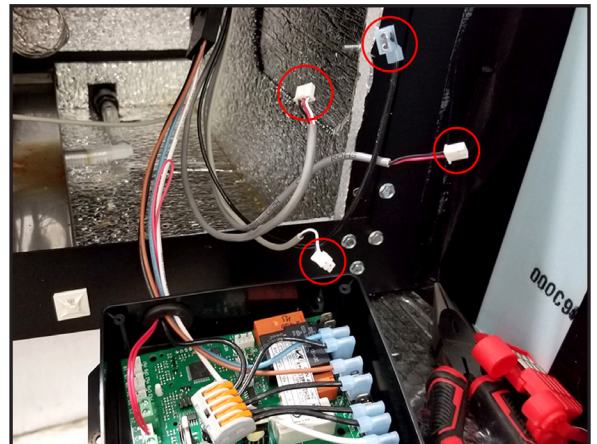
- 7** Pull the enclosure from the unit forward and remove lid using Phillips screwdriver.



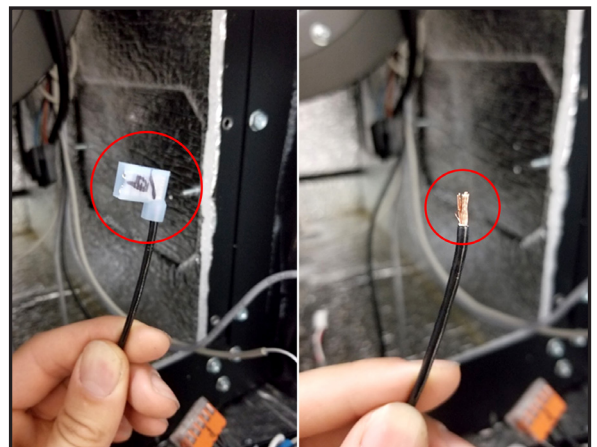
- 8** Locate the following wires: Pb1, Pb2, Display, and flag connector from terminal #6.



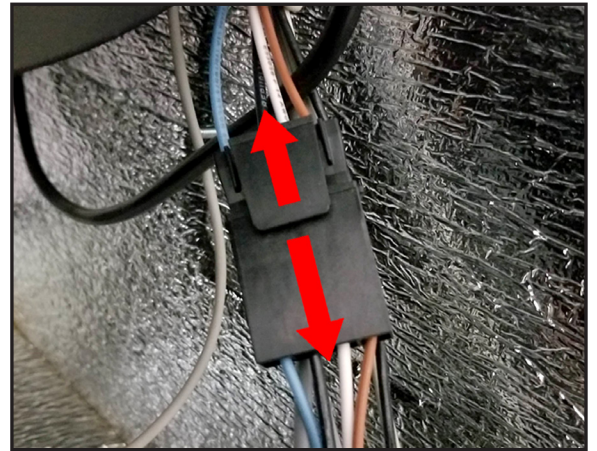
- 9** Disconnect Pb1, Pb2, Display, and flag connector from terminal #6. Next, remove the wires from the enclosure as shown.



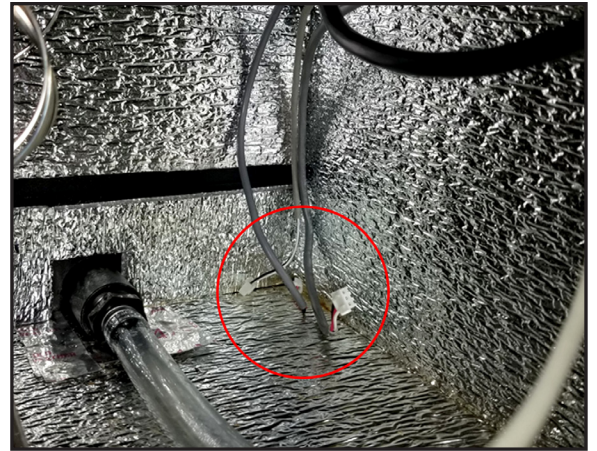
- 10** Cut the flag connector from the black wire as shown.



- 11** Disconnect the 4 pin Molex connector as shown. The original controller enclosure is now safe to remove completely from the unit.

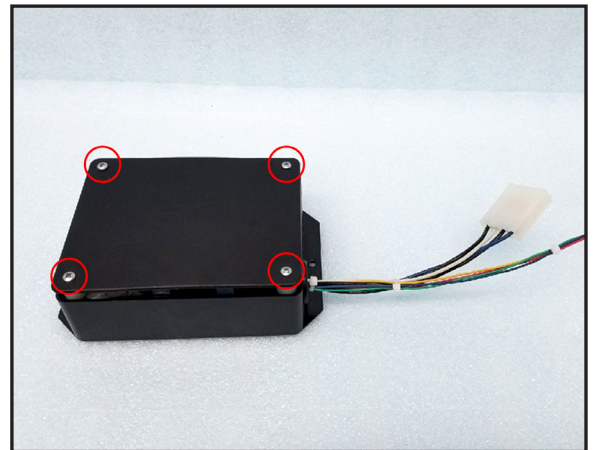


- 12** The remaining wires which were removed from the previous enclosure are no longer needed. They can be positioned out of the way as shown or cut and removed from the unit.

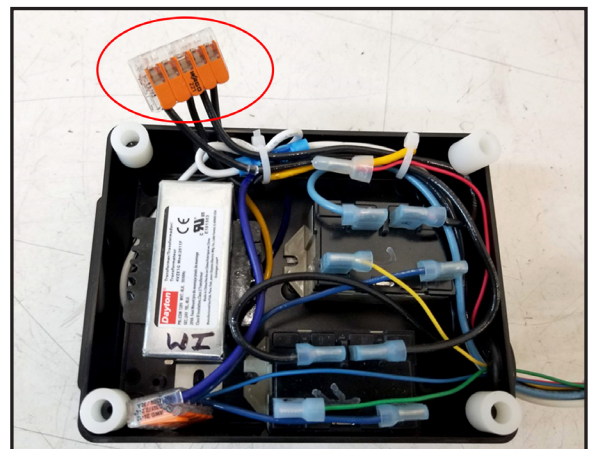


- 13** Locate the 24V Conversion Kit. Remove the top by removing the 4 screws.

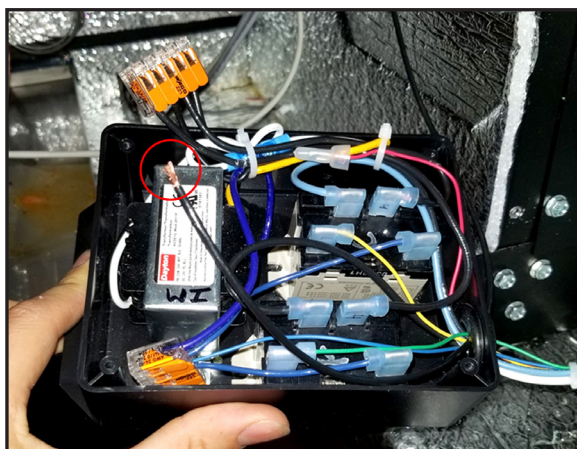
Note: Conversion Kit will be mounted in the same location where the previous controller box was mounted.



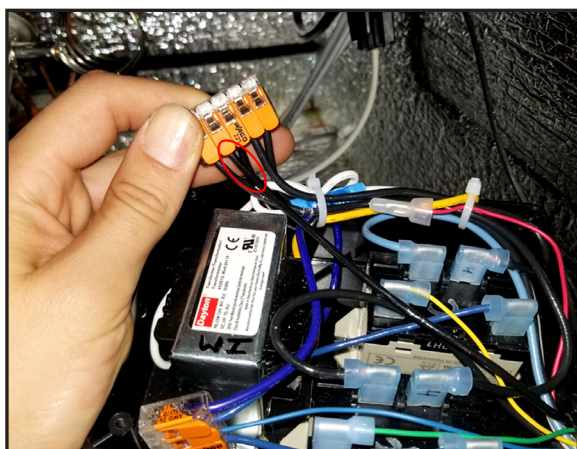
- 14** Locate the Lever connector which houses the black wires as shown.



- 15** Route the black wire which was removed from the previous enclosure into the new enclosure.



- 16** Insert the black wire into the lever connector as shown.



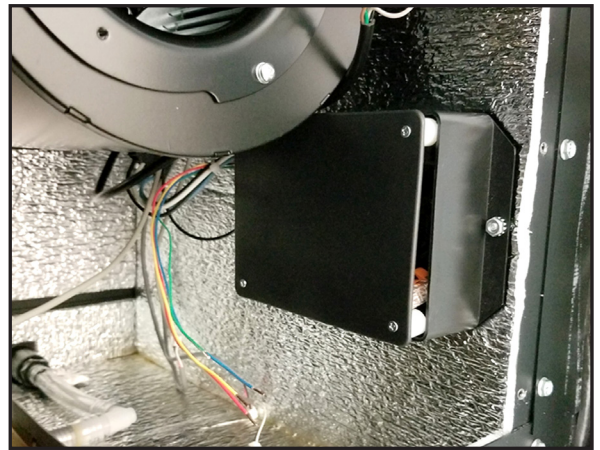
- 17** Re-install the box cover.



- 18** Connect the 4 pin Molex connector from the new 24V kit to the existing unit wire harness as shown.



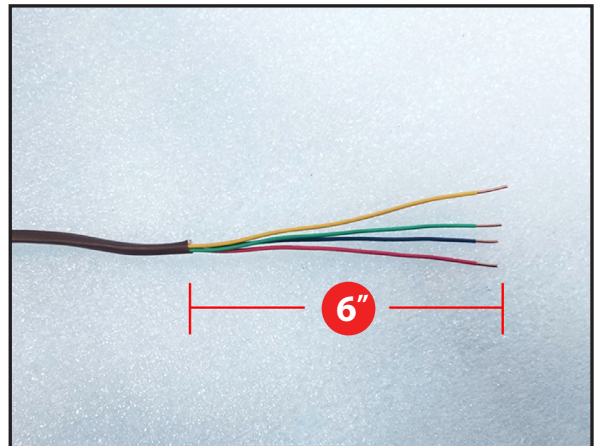
- 19** Install the new 24V Kit enclosure in the same location as the previous enclosure using the previously removed hex nut hardware.



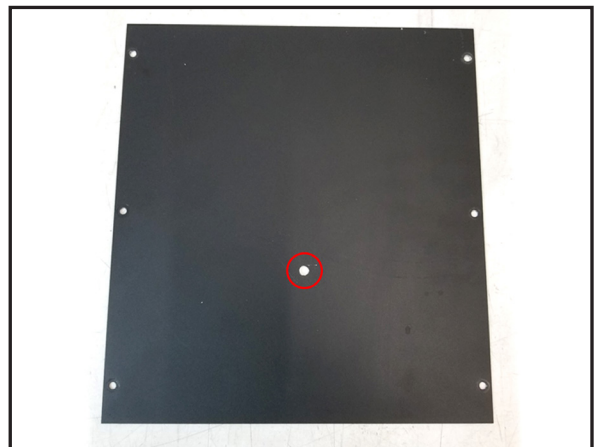
- 20** Route 18/5" thermostat wire from the thermostat location to the evaporator unit.



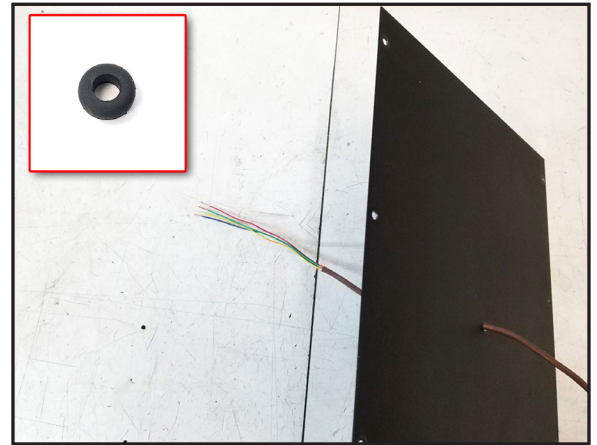
- 21** Strip off 6" from the thermostat wire casing. Cut and remove white thermostat wire. Strip off about 1/4" of the blue, red, green and yellow thermostat wire casing to expose the copper.



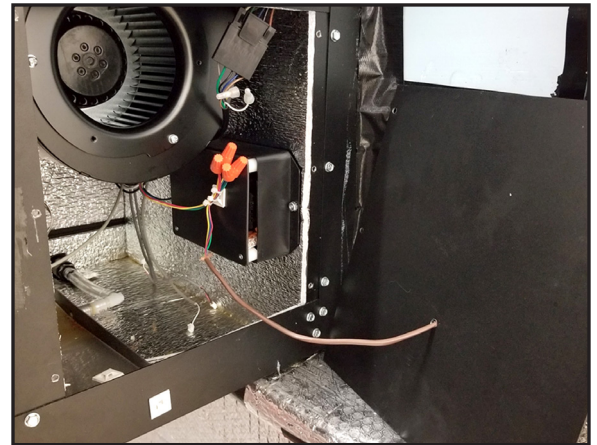
- 22** Drill a 5/16" hole in the previously removed access panel as shown.



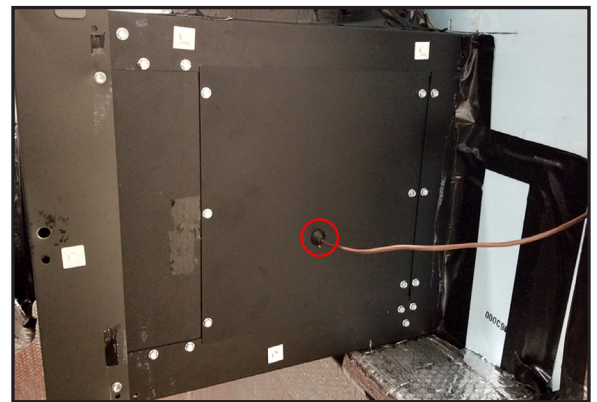
- 23** Insert provided grommet into hole.
Insert thermostat wire through the 5/16" hole.



- 24** Connect thermostat wires with the provided wire nuts by color matching red to red, blue to blue, green to green and yellow to yellow. Secure the wires to the enclosure using cable ties and adhesive pad.



- 25** Install the evaporator access panel onto the unit using the six previously removed screws. Use cork tape or duct tape to seal around the hole which the wire was ran through.



- 26** The conversion is now complete. Reconnect power to the evaporator unit.



**The 24V Thermostat Conversion Kit
has been successfully installed.**

*Whisper***KOOL™**

WhisperKOOL
1738 E. Alpine Ave
Stockton, CA 95205
1-800-343-9463
www.whisperkool.com